

Manor Road Quarter, Canning Town

**MORGAN
SINDALL**
CONSTRUCTION

Progress Photos 02.08.2023



Manor Road Quarter, Canning Town

**MORGAN
SINDALL**
CONSTRUCTION

Block A















EN14195

EN14195

EN14195

EN14195

EN14195

EN14195





PLEASE DO NOT REMOVE THIS PROTECTION

DO NOT PLACE ANY OBJECTS ON THESE SURFACES

DO NOT PLACE / STORE ANY OBJECTS ON THESE SURFACES

IMPORTANT - PLEASE DO NOT REMOVE THIS PROTECTION

Handwritten: 3-04

symphony

symphony

PLEASE DO NOT REMOVE THIS PROTECTION

BLADE FLOORING LTD





873









Manor Road Quarter, Canning Town

**MORGAN
SINDALL**
CONSTRUCTION

Block B







Symphony

Finishing

Symphony

Symphony

Symph

Symphony





Symphony[®]

Symphony[®]

IMPORTANT-PLEASE DO NOT REMOVE THIS PROTECTION

DO NOT PLACE / STORE ANY OBJECTS ON THESE SURFACES

Symphony[®]

Symphony[®]

BLADE FLOORING LTD

BLADE FLOORING LTD

BLADE FLOORING LTD

BLADE FLOORING LTD



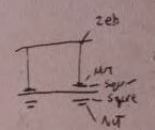


Warning: High Voltage
Warning: High Voltage

EN1-195
EN1-195

REPLACE ME COMPLETELY

D. CE BB. CB



Σ
+
+





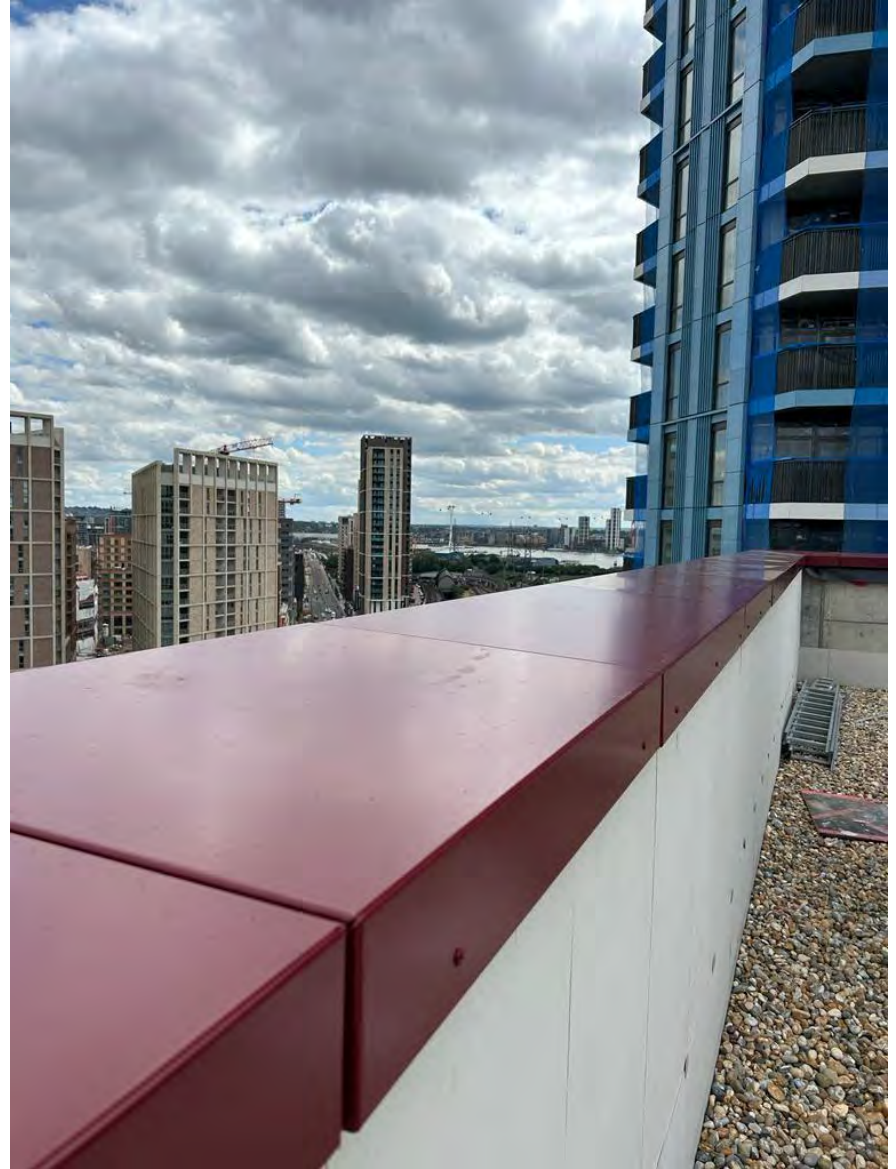
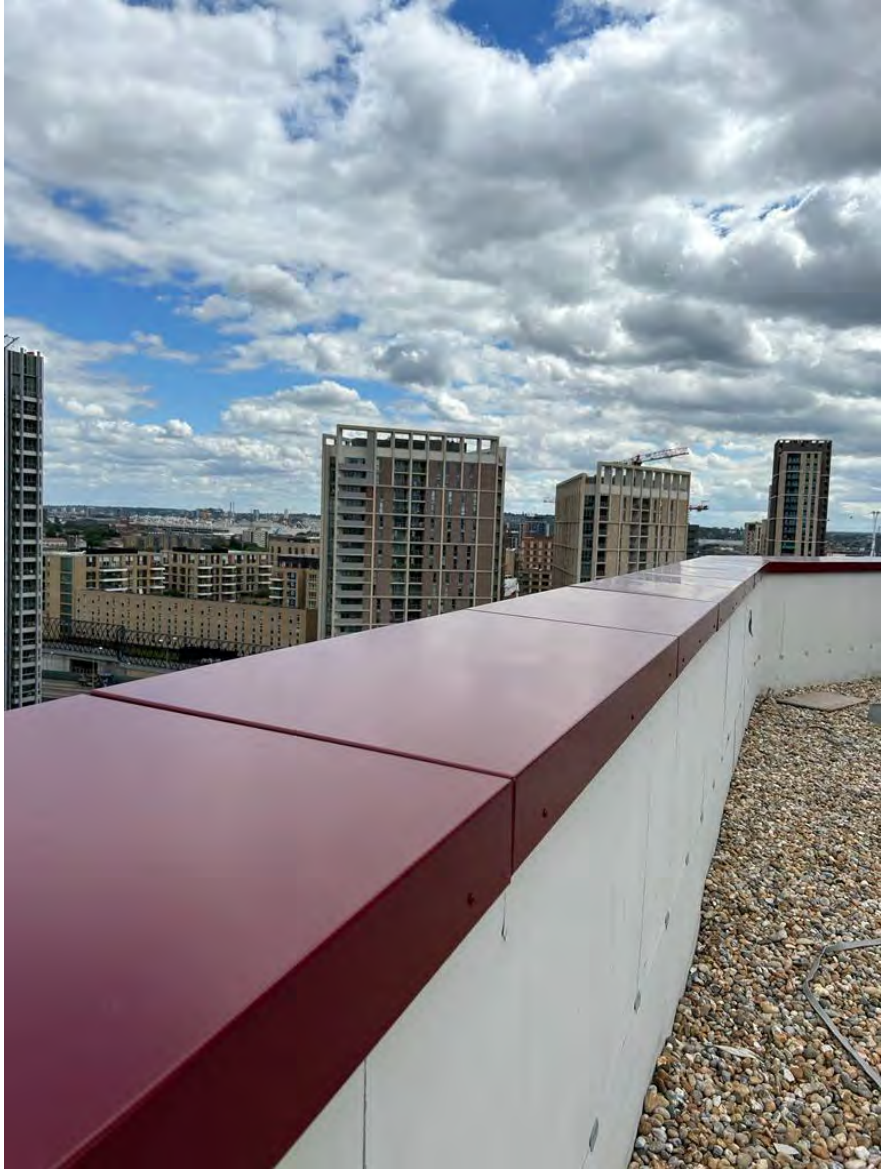
Manor Road Quarter, Canning Town

**MORGAN
SINDALL**
CONSTRUCTION

Block C



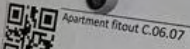












Apartment fitout C.06.07

FIT.C.06.07

MORGAN SULLIVAN
Marion Road







Warning
Working at height or near open
dangerous and can lead to
injury or death

DO NOT TOUCH LIFT DOORS

Red card offence

2130
465



Manor Road Quarter, Canning Town

**MORGAN
SINDALL**
CONSTRUCTION

External Works



